

**Counter (Online Monitor Contained)**



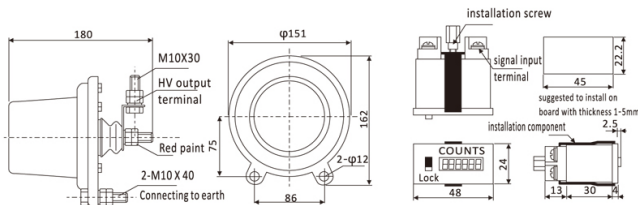
As a special ancillary product of arrester, counter is series connected with arrester for recording arrester's working situation. Specially suitable for high voltage huge capacity system and vacuum switchgear in which frequent operations are required, also can be used to match with three phase over-voltage protection products.

Counter is classified as dial-outdoor type and switchgear used separate type according to different structures. the counter differs from functions as simple counter and additional current monitor type. We even can divide counters into valve-block sampling type and mutual inductor sampling type according to different elements. All kinds of counters above are available in Zhongyi Power.

**Technical specification for several regular types are as following:**

Type	Description	System Voltage Level (kV)	Nominal Discharge Current (kA)	Action Current Range (A)	Nominal Current Additional Residual Voltage (kA)	2 μ S Rectangular Through Capacity (A)	4/10 High Current Withstand (kA)
JS-8	Ordinary Dial Counter	3-66kV	5	50-5000	1	400	65
JCQ-II	Current Type Online Monitor	3-110kV	10	50-5000	1	600	100
JSC-2	Divided Type Cabinet Used Counter	3-66kV	5	50-5000	0	800	10

Please refer to counter usage instruction for detail information. Please add letter "J" at the end of standard model number for deploying counter to arrester (letter "JCQ" stands for arrester with additional current monitor property).



JS/JCQ counter shape diagram

Split JSC type counter for cabinet use

**Disconnecting Switch**

**Disconnecting Switch**

**Introduction**

Outdoor HV Disconnecting Switch series are high voltage switch equipment for unipolar structure, can be used to divide or close circuit on outdoor 12kV power lines without load. A fixed hook and self-locking device is designed, flexible and reliable, using insulation hook bars. Outdoor high voltage disconnecting switch of anti-pollution type meet users' requirements for seriously polluted area, and can effectively solve the pollution flashover in operation.

**Usage**

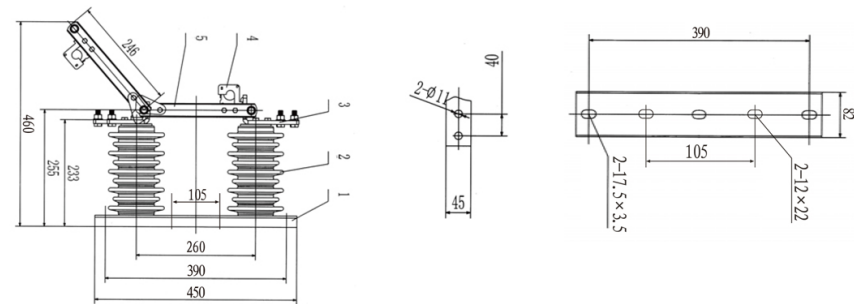
Disconnecting Switch is applied to power system with AC 50 Hz, rated voltage 10 kV. It is used to cut off and close single phase or three-phase circuit with no load and voltage.

**Structure Characteristics**

Disconnecting switch is composed of the base, pillar insulator conductive parts, and insurance hook, etc, cutting off and closing circuit by guillotine structure points switching. Each phase knife switch. The height of the spring can be adjusted to get needed contact pressure. Insulation hook rod can be used to open and close divide-shut brake. The knife switch itself has a self-locking device.

**Working Conditions**

- ★ Environment temperature: -40°C ~ +40°C
- ★ Earthquake under 8 level
- ★ Altitude no more than 1500m
- ★ Max wind speed no more than 35M/S
- ★ Normal installation site should be free from gas, steam, chemical deposition, salt spray, dust and other explosive, corrosive substances which have serious effect on insulating and conducting ability disconnecter switch
- ★ Anti-pollution type is suitable for the heavy polluted areas, but there should be no material causing fire and explosion



- |                        |                             |
|------------------------|-----------------------------|
| 1. Base                | 4. Lock hook                |
| 2. Porcelain insulator | 5. Current conducting plate |
| 3. Wire connector      |                             |

**FGW9 Series**



12/15/24/36kV

**Technical Specifications**

Type	Rated voltage (kV)	Rated current (A)	4S Heat steady current (A)	Impulse withstand voltage (kV)		Power-frequency withstand voltage (kV)		
				To earth	Across the disconnecting distance	To earth	Across the disconnecting distance	
Antifouling Type	MT-GW9-12/400	12	400	12.5	75	85	42	48
	MT-GW9-12/630	12	630	20	75	85	42	48
	MT-GW9-12/900	12	900	25	75	85	42	48
Plateau Type	MT-GW9-12/1250	12	1250	40	75	85	42	48
	MT-GW9-15/400	15	400	12.5	110	125	47	54
	MT-GW9-15/630	15	630	20	110	125	47	54
	MT-GW9-15/900	15	900	25	110	125	47	54
	MT-GW9-15/1250	15	1250	40	110	125	47	54

**Other Series**



**MT-GW9 Series**



**MT-GW4 Series**

**MT-HGW1 Series**



**MT-GW1 Series**