

Line Fitting
(Iron)



Cable Lugs
& Connectors



Power Tools



Heat & Cold
Shrinkable



Fuse & Lighting
Arrester & Insulator



Line Fitting
(Cu & Al & Plastic)

ELECTRIC POWER FITTING

WE LEAD
Power
— YES Pinoy —

Contents



Cable Lugs & Connectors >>01-33



Line Fitting (Cu & Al) >>34-57



Line Fitting (Iron) >>58-77



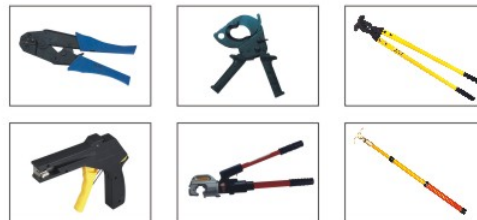
Fuse & Lighting Arrester & Insulator >>78-105



Cable Accessory >>106-121



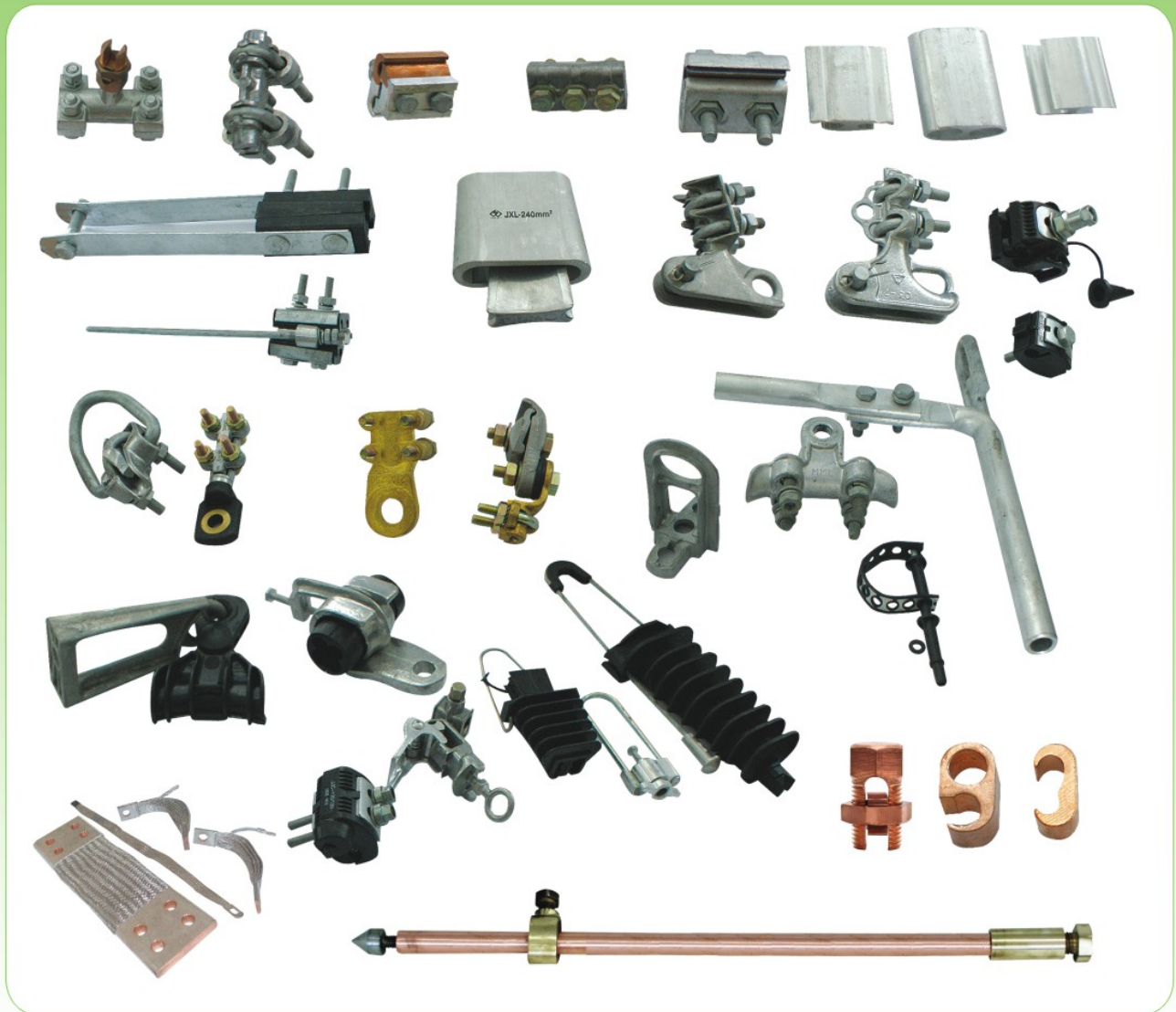
Plastic Product >>122-132



Power Tools >>133-144

Line Fitting

(Copper Aluminium Plastic)



Bimetallic T Connector



LTJ



TLTJ



TTJ-16/70

TTJ-16/120



CASU-1

CASU-2

Tension Clamp



NZJA-1



NZJA-2



NZJB-2



NZJA-3

Aluminium P.G. Connector



AJBL-3A



AJBL-2B



AJBL-3B



T-Connector



AJBL-16/120

Slot Clamp



SCJA-1



SCJA-2



Line Tape-S
Line Tape-M
Line Tape-B

Suspension Clamp



XCJA-A



XCJA-B

ABC Dead End Clamp



YJPA 25A

YJPA 25B

YJPA 25C

YJPAR20

Item No.	Conductor (mm ²)	Messenger DIA. (mm)	Breaking load (KN)
YJPA 25A	2X16-4X25	4-8	2
YJPA 25B	2X(16-25)	4-8	2
YJPA 25C	2X16-4X25	4-8	2
YJPAR20	2X(16-35)	10-16	2.5



YJPC63

YJPA500

YJPAP1500

YJPAP2000

Item No.	Conductor (mm ²)	Messenger DIA. (mm)	Breaking load (KN)
YJPC63	2X16-4X25	6-16	3
YJPA500	16-25	3-9	6
YJPAP1500	50-70	11-14	10
YJPAP2000	70-95	14-16	15



JBG1000~2000

YJPA 1000

YJPA 1500

YJPA 2000

Item No.	Conductor (mm ²)	Messenger DIA. (mm)	Breaking load (KN)
JBG-1000	25-35	8-11	10
JBG-1500	50-70	11-14	15
JBG-2000	70-95	14-16	20
YJPA 1000	25-35	8-11	10
YJPA 1500	50-70	11-14	15
YJPA 2000	70-95	14-16	20

ABC Dead End Clamp



YJPA235



YJPA435



YJPSP120



YJPSP120S

Item No.	Conductor (mm ²)	Messenger DIA. (mm)	Breaking load (KN)
YJPA235	2X(16-35)	4-11	6.5
YJPA435	2X16-4X35	4-11	8
YJPSP120	4X(25-120)	10-30	20
YJPSP120S	4X(25-120)	10-30	40



YJPAS 216/435



YJPAT 235/50



YJPAT 435/50



YJPAT 470/95



YJPAT 450/120

Item No.	Conductor (mm ²)	Messenger DIA. (mm)	Breaking load (KN)
YJPAS 216/435	2X16-4X35	4-11	4
YJPAT 235/50	2X(35-50)	11-14	15
YJPAT 435/50	4X(35-50)	11-14	15
YJPAT 470/95	4X(70-95)	14-16	40
YJPAT 450/120	4X(50-120)	11-17	40



YJPM 70



YJM 25



YJPAZ 70



YJPAZ 150

Item No.	Conductor (mm ²)	Messenger DIA. (mm)	Breaking load (KN)
YJPM 70	50-70	11-14	15
YJM 25	2X6-4X25	4-8	3
YJPAZ 70	35-70	11-14	30
YJPAZ 150	95-150	16-21	40

ABC Dead End Clamp



YJPAG 216/425



YJPAG 216/25



YJRPA 425/50



YJRPA 450/120

Item No.	Conductor (mm ²)	Messenger DIA. (mm)	Breaking load (KN)
YJPAG 216/425	2X16-4X25	4-8	8
YJPAG 216/25	2X(16-25)	4-8	6
YJRPA 425/50	4X(25-50)	7-12	20
YJRPA 450/120	4X(50-120)	11-17	30

Suspension Clamp



YJPS 1500



YJPSP 25/120



YJLM 1500



YJPS 54

Item No.	Conductor (mm ²)	Messenger DIA. (mm)	Breaking load (KN)
YJPS 1500	25-95	7.5-16.5	12
YJPSP 25/120	2X(25-35)-4X(16-120)	12-42	12
YJLM 1500	25-95	7.5-15.5	8
YJPS 54	25-95	7.5-15.5	10



YJPS 95



YJPS 95N



YJPS 95E



YJES 54-14

Item No.	Conductor (mm ²)	Breaking load (KN)	Messenger DIA. (mm)
YJPS 95	25-95	10	7.5-16.5
YJPS 95N	16-95	10	5-13
YJPS 95E	25-150	30	5-21
YJES 54-14	25-95	bracket: 15 YJPD54: 8	5-13

OPTIC Dead End Clamp



AC-O-07-500



AC-O-10-500



AC-O-08



AC-O-05

Item No.	Messenger DIA. (mm)	Breaking load (KN)
AC-O-07-500	3-7	7
AC-O-10-500	4-10	10
AC-O-08	3-7	4
AC-O-05	3-5	2



AC-O-06



AC-O-07



AC-H-6



YJPTS

Item No.	Messenger DIA. (mm)	Breaking load (KN)
AC-O-06	3-6	3
AC-O-07	3-7	6
AC-H-6	2X(3-6)	3

Suspension Clamp



YJPT

Item No.	Conductor (mm ²)	Breaking load (KN)
YJPT 25	2X16/4X25	12
YJPT 50	4X25/4X50	43
YJPT 95	4X70/4X95	43



YJPL

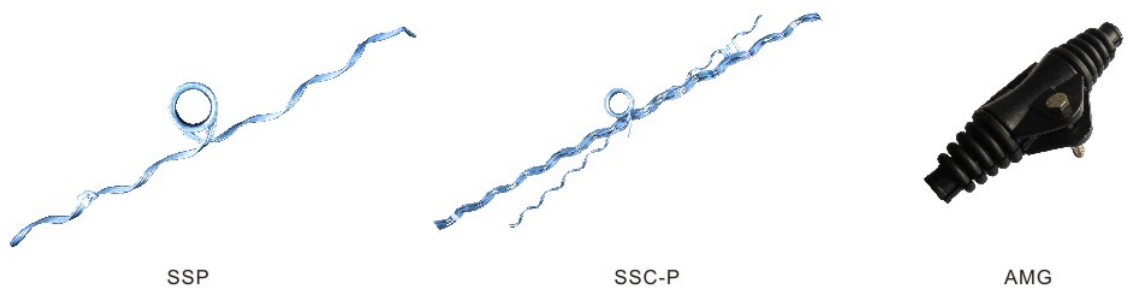
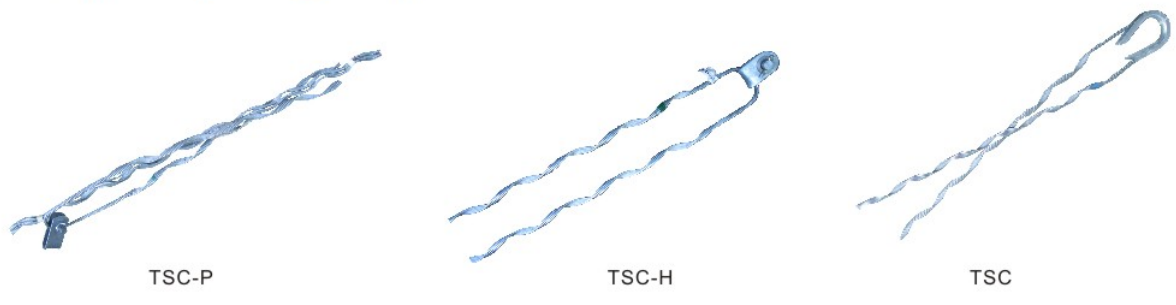
Material: High Strength Aluminium Alloy

Item No.	Conductor (mm ²)	Breaking load (KN)	Item No.	Conductor (mm ²)	Breaking load (KN)
YJPL-1	16	4	YJPL-4	50	13
YJPL-2	25	6	YJPL-5	70	18
YJPL-3	35	9	YJPL-6	95	18

OPTIC Line Accessory



OPTIC Spiral Tightening Clamp





YJPF 93-1PC

YJPF 1

YJPF 2

YJPF 3

YJPF 4

Item No.	Distance from the wall (cm)	Capacity
YJPF 93-1PC	1	Dia. 10-40mm
YJPF 1	1	Dia. 10-45mm
YJPF 2	6	Dia. 18-55mm
YJPF 3		Dia. 12-47mm
YJPF 4	3.5	Dia. 14.5-50mm



YJCR 1500A



YJCR 1500B



YJCA 1500



YJCA 2000

Item No.	Breaking load (KN)
YJCR 1500A	15
YJCR 1500B	15

Item No.	Breaking load (KN)
YJCA 1500	15
YJCA 2000	20



YJCS 1500



YJCA 25B



YJCT 1500



YJCT 2000

Item No.	Breaking load (KN)
YJCS 1500	10
YJCA 25A/B	2

Item No.	Breaking load (KN)
YJCT 1500	10
YJCT 2000	15

Insulator Piercing Connector: (Low Voltage Series)



JBC-1



JBC-2



JBC-3

Item No.	Conductor Cross Section(mm ²)		Bolts QTY.
	Main	Branch	
JBC-1	35-70	6-35	1
JBC-2	35-150	35-150	1
JBC-3	50-240	50-150	2

LV Insulator Piercing Connector



Item No.	Conductor Cross Section(mm ²)		Bolts QTY.
	Main	Branch	
YJEPS	2.5-35	1.5-6	1xM6
YJEP	16-95	1.5-10	1xM6
YJ2-95	16-95	4-35(50)	1xM8
YJ2-150	50-150	6-35(50)	1xM8
YJ3-95	25-95	25-95	1xM8
YJ4-150	50-150	50-150	2xM8

Insulator Piercing Connector: (Low Voltage Series)



Item No.	Conductor Cross Section(mm ²)		Bolts QTY.
	Main	Branch	
TTD051F	16-95	1.5-10	1xM8
TTD101F	6-54	6-35	1xM8
TTD151F	25-95	(2.5)6-35	1xM8
TTD201F	35-95	25-95	1xM8
TTD281F	120-185	10-25	1xM8
TTD282F	25-95	2.5-35	1xM8
TTD2D82F	25-95	2x(6-35)	1xM8
TTD301F	25-95	25-95	2xM8
TTD401F	50-185	50-150	2xM10
TTD451F	120-185	70-185	2xM10

The Accessories of IPC

Cable Cap



YJF35 YJF70 YJF95

YJFT235

YJFCC

CE6-35 CE16-150

Item No.	Rod Cross Section(mm ²)	Conductor Cross Section(mm ²)	Note
YJF35	35	2.5-35	USE WITH IPC.
YJF70	70	25-70	USE WITH IPC.
YJF95	95	25-95	USE WITH IPC.
YJFT235	70	2X(6-35)	USE WITH IPC.
YJFCC	25		USE WITH IPC.
CE6-35		6-35	
CE16-150		16-150	

Insulator Piercing Connector: (Low Voltage Series)



NTD 151AF



NTD 301AF

Item No.	Conductor Cross Section(mm ²)		Bolts QTY.
	Main	Branch	
NTD 151AF	16-95	2.5-35	1xM8
NTD 201AF	7-95	25-95	1xM8
NTD 241AF	50-150	6-35	1xM8
NTD 251AF	50-150	35-95	1xM8
NTD 301AF	7-95	35-95	2xM8
NTD 351AF	50-150	35-95	2xM8
NTD 401AF	50-150	50-150	2xM8



IPC3.1



IPC3.2



IPC3.3



IPC3.4



CT-1



DCNL-2

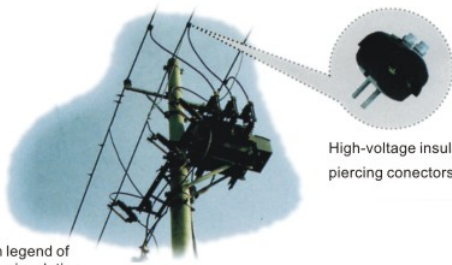
Item No.	Conductor Cross Section(mm ²)		Bolts QTY.
	Main	Branch	
IPC3.1	16-95	10-25	1
IPC3.2	70-95	70-95	1
IPC3.3	120-185	16-25	1
IPC3.4	70-185	70-185	2
CT-1	25-70	6-35	1
DCNL-2	16-95	4-35	1

Insulator Piercing Connector: (10kV Series Products high Voltage Series)

Applicable to branch connection and succession of 10KV overhead insulated lead.

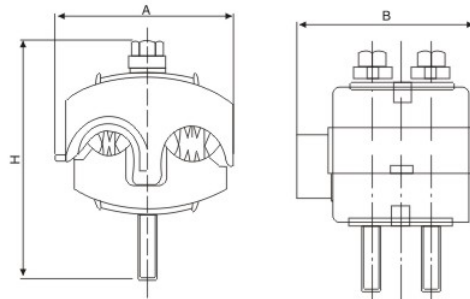
Type	Equivalent tpe	Applicable lead		Mian dimensions			Nominal current	Bolt number	Piercing depth
		Main line	Branch line	A	B	H			
YJ10-240/240	JJC10-1	95~240	95~240	89	85.5	112	530	2	4.5-6
YJ10-240/150	JJC10-2	95~240	50~150	84	83	112.5	366	2	4.5-6
YJ10-185/50	JJC10-3	95~185	16~50	78.5	77.5	112.5	180	2	4.5-6
YJ10-95/70	JJC10-4	25~95	16~70	68	82.5	107.5	226	2	4.5-6
YJ10-240/50	JJC10-5	240/50	240/50	88	102	130	503	2	4.5-6

Please phone us for sepcial specification and type



High-voltage insulation piercing conectors(IPC)

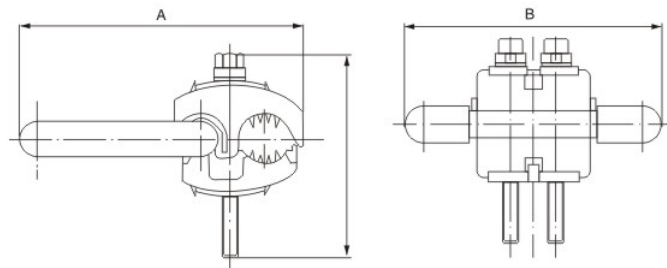
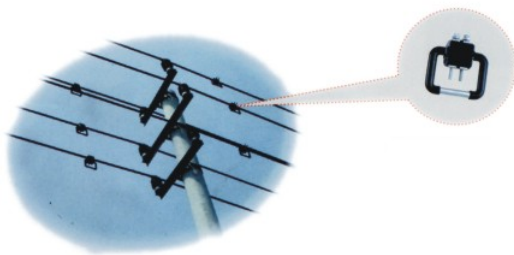
Application legend of high-voltage insulation piercing connectors(IPC)



Piercing Ground Connectors

Applied to 10KV, following air insulated lead earth protection and temporary prove electricity.

Type	Equivalent tpe	Applicable voltage	Applicable lead	Mian dimensions			Nominal current	Bolt number	Piercing depth
				A	B	H			
YJ10-240/150	YJ10-1	10KV 1KV GENERAL	150~240	160	140	112.5	476	2	4.5~6
YJ10-185/95	YJ10-2		95~185	152	140	112.5	476	2	4.5~6
YJ10-95/25	YJ10-3		25~95	144.5	140	95.2	257	2	4.5~6
YJ10-25/95	MIN		25~95	62	102	85	276	1	4.5~6





YJCT 70



YJCT 95



YJCT 295

Item No.	Conductor (mm ²)	Note
YJCT 70	16-70 / 1.5-35	
YJCT 95	35-95 / 4-50	
YJCT 295	35-95 / 2X2.5-35	



YJPGC-A



YJPGC-B

Item No.	Conductor (mm ²)		Messenger DIA.(mm)	Tightening Torque(Nm)
	Main	Branch		
YJPGC-A	10-95AL 1.5-70CU	10-95AL 1.5-70CU	3-16	20
YJPGC-B	10-150AL 10-95CU	10-54.6AL 10-35CU	6-19 / 6-13.3	26



YJPGH-1



YJPF 16/95



Insulator Bracket C200



Copper Transition Connector



BIC 10-50

Item No.	Conductor (mm ²)		Messenger DIA.(mm)	Tightening Torque(Nm)
	Main	Branch		
YJPGH-1	10-95AL 1.5-70CU	10-95AL 1.5-70CU	3-16	22
YJPF 16/95	6-16AL/CU	16-95AL/CU	inside with fuse 10.3x38 1max=20A	

ABC Tools



PHASE SEPARATOR E894



ROLLER PM 2



RT 1

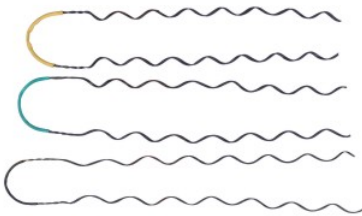


RT 5



CT 10/13
CT 13/17

Guy Dead Ends



ITEM NO.	CONDUCTOR SECTION (mm ²)	COLOR MARKING
YJCB35	35-50	YELLOW
YJCB70	70-95	GREEN
YJCB120	120-150	BLACK



YJT



C6 CLAMP

Metal Band & Clips



ITEM NO.	WIDTH(mm)	THICKNESS(mm)	LENGTH(m)
YJCF 10A	10	0.4	25/50
YJCF 10B	10	0.7	25/50
YJCF 20A	20	0.4	25/50
YJCF 20B	20	0.7	25/50



C-1B



C-1S



C-2B



C-2S

ITEM NO.	WIDTH(mm)
C-1B	20
C-1S	10
C-2B	20
C-2S	10

PG-CLAMP With Accessories



YJPGZ-1



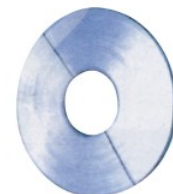
YJPGZ-2



AL Coil

Item No.	CONDUCTOR MM ²
YJPGZ-1	35-150
YJPGZ-2	35-150

Aluminium Tape



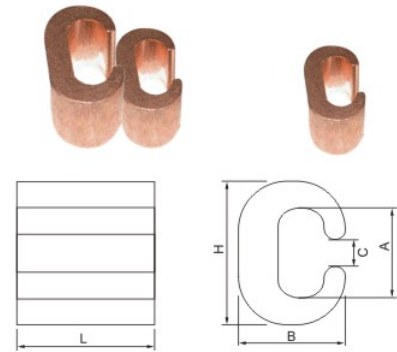
ALT

Item No.	Size WxT(mm)	Length(m)
ALT	25x3	100

Note: Can be OEM

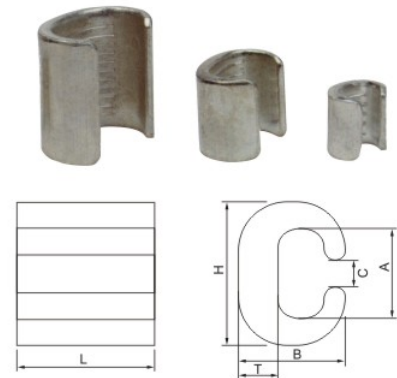
CCA C-CLAMP

Item No.	Conductor(mm ²)	Dimensions(mm)					Note
		H	A	B	L	C	
CCA-1	25~35	25	20	15	20	10	Material: Cu≥99.9%
CCA-2	50~70	34	24	21.5	23	11	
CCA-3	95~95	41	28	25	27	14.5	
CCA-4	120~120	48	32	29	30	16	



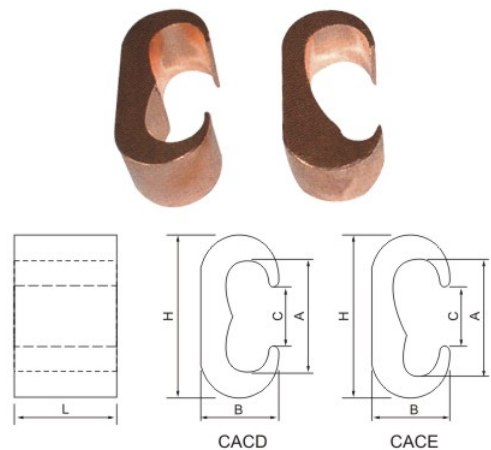
CCT C-CLAMP

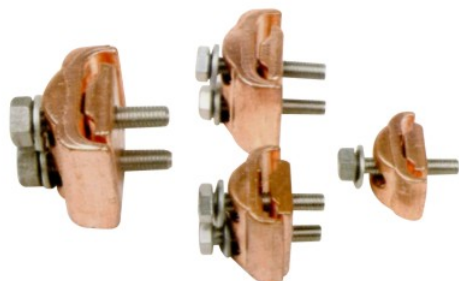
Item No.	Conductor(mm ²)	Dimensions(mm)					
		H	A	B	L	C	T
CCT-10	7.5-14	9.5	6.3	6.2	12	4	1.6
CCT-16	14.5-16	11.8	7.8	7.8	13	5	2
CCT-20	16.5-20	12.8	8.6	9.7	13	5.4	2.9
CCT-26	21-26	14.7	10.2	10.0	16	6.5	3.2
CCT-44	27-44	19	13.4	14.4	20	8.5	4
CCT-60	45-60	21	15.4	15.4	22	9.7	4
CCT-76	61-76	24.4	17.3	17.6	22	10.8	5
CCT-98	77-98	27.8	20.8	18.8	25	12.8	5
CCT-122	99-122	29.8	22.1	21.2	26	13.5	5.5
CCT-154	123-154	34	25.7	24.4	28	17	6
CCT-190	155-190	37	28.5	25.4	35	17.4	6
CCT-240	191-240	40	30.2	28.5	40	19	7
CCT-288	241-288	44.5	34.7	34.1	45	22.3	7
CCT-365	289-365	47.5	37.7	34	50	24.8	7
CCT-450	366-450	57	42.5	41	60	28	10
CCT-560	451-560	62	46	44	65	31	11
CCT-700	561-700	68	54	49.5	70	44	12



CACD/CACE C-CLAMP

Item No.	Conductor(mm ²)	Dimensions(mm)				
		H	A	B	L	C
CACD-35	35	30	20	14.3	19	11
CACD-70	70	39	28	19	19	15
CACD-120	120	52	39	24	22	21
CACD-240	240	74	56	34	28	33
CACE-35/70	35~70	36	25	18	19	14
CACE-70/120	70~120	50	36	23	19	21
CACE-70/240	70~240	62	45	31	22	28
CACE-120/240	120~240	68	50	34	28	32





CUPG, Parallel Groove Clamp

Item No.	Conductor size (mm ²)	Bolts	Note
CUPG6-70/2	6-70	2	Material: Cu ≥ 99.9%
CUPG10-70/1	10-70	1	
CUPG10-95/2	10-95	2	
CUPG16-150/2	16-150	2	



TYPE-A TYPE-B COVER

JBL(Y) Aluminium Parallel-Groove Connector

Item No.	For the type of conductor	L	L1	B
JBL(Y)-16-120	2 bolts	45	55	46
	3 bolts	64	55	46
JBL(Y)-50-240	2 bolts	45	70	60
	3 bolts	70	70	60
JBL(Y)-120-300	2 bolts	90	75	74
	3 bolts			

A-Two bolts B-Three bolts
The two insulating covers are suitable for JBL-16~120 and JBL-50~240



JBT(Y) Copper Parallel-Groove Connector

Item No.	For the type of conductor	L	L1	B
JBT(Y)-16-120	16~120	45	55	48
JBT(Y)-50-240	50~240	45	70	60



JBTL(Y) Bimetallic Parallel-Groove Connector

Item No.	For the type of conductor	L	L1	B
JBTL(Y)-16-120	16~120	45	55	48
JBTL(Y)-50-240	50~240	45	70	60

CAPG Bimetallic Parallel-Groove Connector

Item No.	Wire range(mm ²)		Bolts Qty.
CAPG-A1	CU6-50mm ²	AL16-70mm ²	single bolt
CAPG-A2	CU10-95mm ²	AL25-150mm ²	single bolt
CAPG-B1	CU6-50mm ²	AL16-70mm ²	double bolts
CAPG-B2	CU10-95mm ²	AL25-150mm ²	double bolts
CAPG-B3	CU16-185mm ²	AL35-200mm ²	double bolts
CAPG-C1	CU6-50mm ²	AL16-70mm ²	three bolts
CAPG-C2	CU10-95mm ²	AL25-150mm ²	three bolts
CAPG-C3	CU25-185mm ²	AL35-200mm ²	three bolts
CAPG-C4	CU35-240mm ²	AL35-300mm ²	three bolts



APG Aluminium Parallel-Groove Connector

Item No.	Wire range(mm ²)	Bolts Qty.
APG-A1	AL16-70mm ²	single bolt
APG-A2	AL25-150mm ²	single bolt
APG-B1	AL16-70mm ²	double bolts
APG-B2	AL25-150mm ²	double bolts
APG-B3	AL35-200mm ²	double bolts
APG-C1	AL16-70mm ²	three bolts
APG-C2	AL25-150mm ²	three bolts
APG-C3	AL35-200mm ²	three bolts
APG-C4	AL35-300mm ²	three bolts



YJBTL Bimetallic PG-CLAMP

Item No.	AL Side mm ²	CU Side mm ²	Bolts QTY.
YJBTL-1A	10-50	1.5-10	1xM8
YJBTL-2A	16-95	2.5-25	1xM8
YJBTL-3A	16-120	6-35	2xM8
YJBTL-4A	50-240	10-95	2xM10
YJBTL-5A	16-70	16-120	2xM10
YJBTL-6A	16-70	16-120	3xM8



JAPG Aluminium Parallel-Groove Connector

Item No.	Wire range(mm ²)	Bolts Qty.
JAPG-1	AL25-35mm ²	double bolts
JAPG-2	AL50-70mm ²	double bolts
JAPG-3	AL95-120mm ²	double bolts





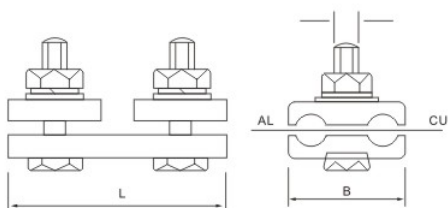
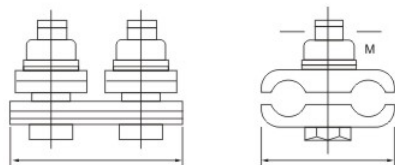
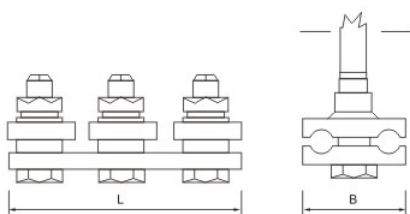
JB



JBT



JBTL



JB JBT JBTL Series Parallel-Groove Connector

JB Aluminium P.G. connector

Item No.	Wire Range(mm ²)	Dimensions(mm)		
		B	L1	L2
JB-0	LGJ-16-25	36	70	M10
JB-1	LGJ-35-50	43	80	M12
JB-2	LGJ-70-95	50	112	M12
JB-3	LGJ-120-150	62	138	M16
JB-4	LGJ-185-240	71	142	M16

JBT Copper P.G. connector

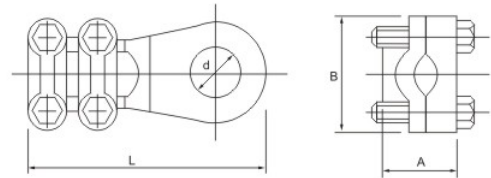
Item No.	Wire Range(mm ²)	Dimensions(mm)		
		B	L1	L2
JBT-0	16-25	35	55	M10
JBT-1	35-50	40	60	M10
JBT-2	70-95	50	65	M12
JBT-3	120-150	58	71	M12
JBT-4	185-240	65	76	M12

JBTL Bimetallic P.G. connector

Item No.	Wire Range(mm ²)	For copper wire	B	L1	L2
JB-TL-0	16-25	16-25	35	60	M10
JB-TL-10	35-50	35-50	40	70	M12
JB-TL-11	35-50	35-50	40	70	M12
JB-TL-21	70-95	70-95	50	100	M12
JB-TL-22	70-95	70-95	50	100	M12
JB-TL-31	120-150	120-150	63	106	M12
JB-TL-32	120-150	120-150	63	106	M12
JB-TL-33	120-150	120-150	63	106	M12
JB-TL-41	185-240	185-240	65	110	M12
JB-TL-42	185-240	185-240	65	110	M12
JB-TL-43	185-240	185-240	65	110	M12
JB-TL-44	185-240	185-240	65	110	M12

WCJC Copper lugs with Clamps

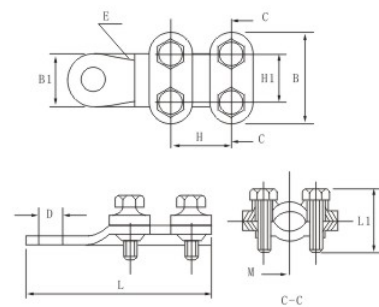
Item No.	Conductor(mm ²)	Dimensions(mm)			
		L	A	B	d
WCJC-1	16	37	10	21	7.5
WCJC-2	25~35	48	13	22	11
WCJC-3	50~70	60	17	31	11
WCJC-4	120~150	70	23	35	15
WCJC-5	210~250	90	30	46	17
WCJC-6	300~500	125	35	62	23



WCJB copper lugs with clamps

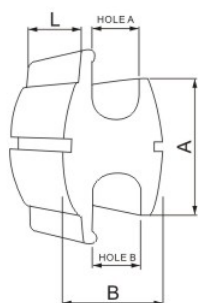
It is suitable for transition connection of the electric appliances of indoors distributing device and kinds of wire cables. It adopts T2 red copper, the surface adopt nickle plating.

Item No.	Conductor(mm ²)	Dimensions(mm)							
		L	L1	B	B1	H	H1	D	M
WCJB-1	16~25	39.5	15	25	16.5	13	13	8.5	5
WCJB-2	16~25	45	15	22	18	13	13	8.5	5
WCJB-3	25~35	52.5	15	24.5	21.2	13.5	13.5	10.5	5
WCJB-4	50~70	61	21	31	23	18.5	18.5	10.5	6
WCJB-5	70~95	69	24	35	23.5	20	20	10.5	6
WCJB-6	95~120	74	20.5	42	28.5	22.5	22.5	13.5	7
WCJB-7	120~150	73.5	30	41	27	24	24	13.5	8
WCJB-8	150~185	76	30	42	28	24.5	24.5	13.5	8
WCJB-9	185~240	80	32	44	30	25	25	13.5	8





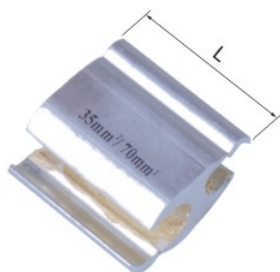
CPH



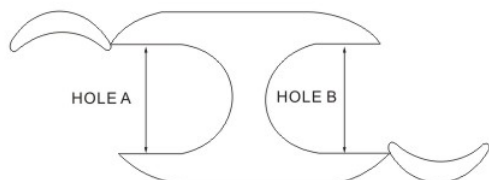
Aluminium Connector Press Type H

Item No.	Hole A mm ²	Hole B mm ²	Dimensions(mm)		
			A	B	L
CPH 35-35	16-35	16-35	23.8	17.5	38
CPH 35-70	16-35	35-70	26	17.8	46
CPH 70-70	35-70	35-70	30.5	20.6	47
CPH 120-120	70-120	70-120	16.5	22.7	52
CPH 70-150	35-70	70-150	34.5	23	70
CPH 150-150	70-150	70-150	39.5	28.4	70
CPH 70-240	35-70	120-240	42	28	90
CPH 150-240	70-150	120-240	46	32	90
CPH 240-240	120-240	120-240	52	32	90

Aluminium Connector Press Type S



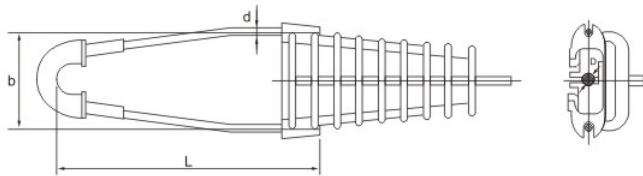
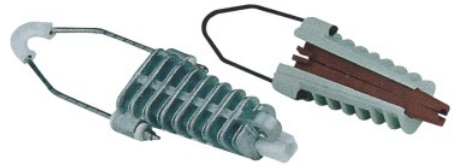
CPS



Item No.	Hole A mm ²	Hole B mm ²	Dimensions(mm)		
			A	B	L
CPS 16-16	10-16	10-16	6.2	6.2	26
CPS 16-35	10-16	25-35	6.2	9	30
CPS 16-70	10-16	35-70	6.2	12	41
CPS 50-70	35-50	35-70	10	12	41
CPS 35-70	25-35	35-70	9	12	41
CPS 70-70	35-70	35-70	12	12	41
CPS 70-150	35-70	70-150	12	17	60
CPS 150-150	70-150	70-150	17	17	60
CPS 240-240	120-240	120-240	21	21	80

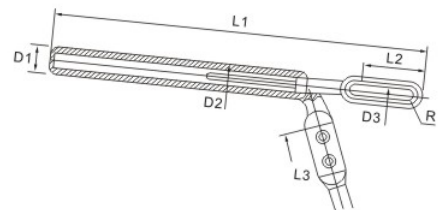
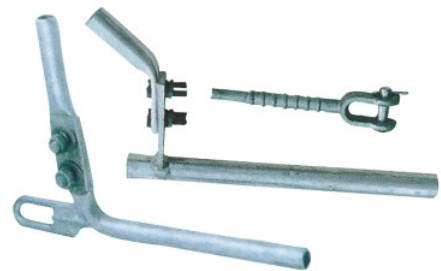
Aluminium-Alloy Dead End Clamp

Item No.	Wire Range (mm ²)	Dimensions(mm)				Gripping (kN)	Rated failure Load(kN)
		b	d	D	L		
NXJ-1(ZNXJ-1)	JKLYJ-35 JKLYJ-50	108	10	18	160	5.3	5.8
NXJ-2(ZNXJ-1)	JKLYJ-70 JKLYJ-95	108	10	20	160	11.0	12.0
NXJ-3(ZNXJ-1)	JKLYJ-120 JKLYJ-150	128	10	23	170	11.0	12.0
NXJ-4(ZNXJ-1)	JKLYJ-185 JKLYJ-240	128	10	27	170	11.0	12.0



NY Tension clamp

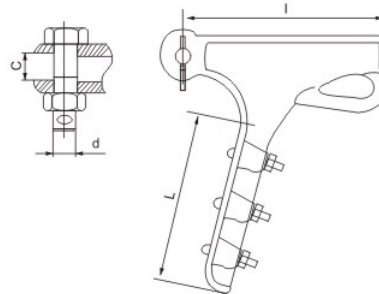
Item No.	Conductor(mm ²)	Dimensions(mm)							(kN)	(kg)
		D1	D2	D3	L1	L2	R	L3		
NY-240/30.1	LGJ-240/30	36	16	18	490	65	10	240	72	2.9
NY-240/40.1	LGJ-240/40	36	16	18	490	65	10	240	79	3.1
NY-240/55.1	LGJ-240/55	36	20	18	520	65	11	250	97	3.2
NY-300/15.1	LGJ-300/15	40	14	16	481	61	11	265	65	3.6
NY-300/20.1	LGJ-300/20	40	14	18	497	67	11	265	72	3.6
NY-300/25.1	LGJ-300/25	40	14	18	502	67	11	265	79	3.5
NY-300/40.1	LGJ-300/40	40	16	18	522	67	11	265	88	3.5
NY-300/50.1	LGJ-300/50	40	18	18	542	77	12	265	98	3.9
NY-300/70.1	LGJ-300/70	42	22	20	577	82	12	265	122	4.5
NY-400/20.1	LGJ-400/20	45	14	18	528	68	13	280	84	4.3
NY-400/25.1	LGJ-400/25	45	14	18	538	68	13	280	91	4.3
NY-400/40.1	LGJ-400/35	45	16	20	563	78	13	280	99	4.6
NY-400/50.1	LGJ-400/50	45	20	20	573	78	13	280	117	4.7
NY-400/65.1	LGJ-400/65	48	22	22	598	83	13	280	123	5.4
NY-400/95.1	LGJ-400/95	48	26	26	650	95	15	280	163	7.1



Tension Clamp (middle and high voltage fitting)



Item No.	Applicable Conductor (mm)	Dimensions (mm)				Rated failure Load (kN)	Weight (Kg)
		L	I	C	d		
NLL-1	5.1~11.4	125	110	18	16	40	0.5
NLL-2	11.4-16	175	186	20	16	40	1.8
NLL-3	14.5-17.5	190	205	22	16	70	1.9
NLL-4	18-22.4	300	285	30	18	90	4.1
NLL-5	23-30	445	345	36	24	120	7.0



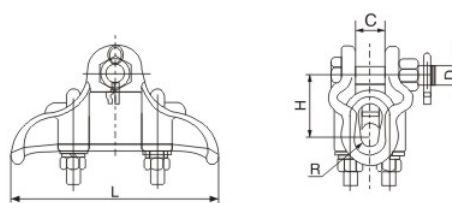
Suspension Clamps (Corona-proof Type)

Item No.	Applicable Conductor (mm)	Dimensions (mm)					Rated failure Load (kN)	Weight (Kg)
		H	C	D	R	L		
XGH-2	5.1~12.5	52.5	25	16	18	166	40	1
XGH-3	12.4~17.0	50.5	23	16	11.5	200	40	1.5
XGH-4	19.0~23.5	50.5	27	16	13.5	225	40	2.3
XGH-5	24.2~28.0	70	32	16	16	260	60	4.4

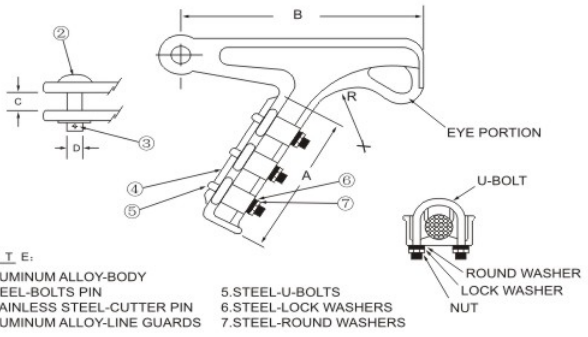
The clamp body and keepers are aluminum alloy, cotter-pin is stainless steel, the other parts are hot-dip galvanized steel.



XGH aluminum alloy clamp (envelop tpe)

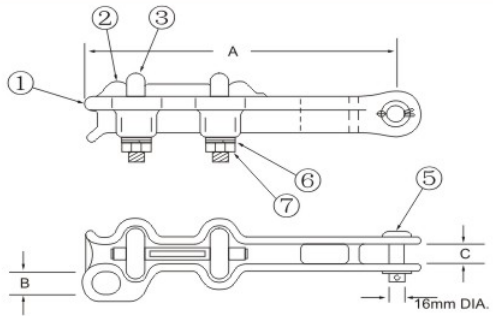


Tension Clamp (middle and high voltage fitting)



- NOTE:**
 1.ALUMINUM ALLOY-BODY
 2.STEEL-BOLTS PIN
 3.STAINLESS STEEL-CUTTER PIN
 4.ALUMINUM ALLOY-LINE GUARDS
 5.STEEL-U-BOLTS
 6.STEEL-LOCK WASHERS
 7.STEEL-ROUND WASHERS

Item No.	Diameter(mm)	Clamp Dimensions					U-Bolts		U.T.S. (KN) Min.
		A	B	C	D	R	No.	Size	
YJSEC-A	11.34	187	203	19	16	95	3	14	36
YJSEC-B	17.35	187	292	25.4	16	137	3	14	45



- NOTE:**
 1.ALUMINUM ALLOY-BODY
 2.ALUMINUM ALLOY-LINE GUARD
 3.STEEL-BOLTS PIN
 4.STAINLESS STEEL-CUTTER PIN
 5.STEEL-BOLTS PIN
 6.STEEL-ROUND & LOCK WASHERS
 7.STAINLESS-NUTS

Item No.	Diameter(mm)	U-Bolts			Clamp Dimensions			U.T.S. (KN) Min.
		No.	Size	A	B	C		
YJDEC-A	11.34	2	12.5	210	25	19	45	
YJDEC-B	14.31	2	12.5	210	25	19	45	
YJDEC-C	17.35	2	14	210	25	19	45	



YJDED-3A



YJDED-3B



YJTED

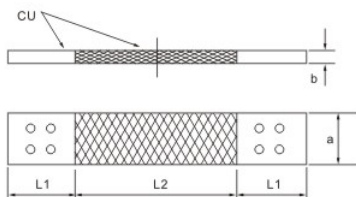
Item No.	Messenger DIA. (mm)	Breaking Load(KN)	Bolts
YJDED-3A	14-19	40	3xM12
YJDED-3B	14-19	40	3xM12
YJTED	11-16	40	2xM12



Copper Braid

Nominal Cross section(mm ²)	Construction No. of strands × No. of wire × layers/single wire diameter(mm)	Width ≤(mm)	Thickness ≤(mm)	Calculated weight (kg/km)
16	24 × 22 × 1/0.20	16	3.0	166
25	24 × 33 × 1/0.20	18	3.5	249
35	24 × 44 × 1/0.20	20	4.0	331
50	24 × 33 × 2/0.20	22	5.0	498
70	24 × 44 × 2/0.20	24	6.5	664
95	24 × 40 × 3/0.20	20	--	905
120	24 × 40 × 4/0.20	22	--	1207
150	24 × 40 × 5/0.20	24	--	1508
185	24 × 40 × 6/0.20	26	--	1810
240	24 × 40 × 8/0.20	30	--	2413
300	24 × 40 × 10/0.20	35	--	3016
400	24 × 40 × 10/0.20+	40	--	4004
	36 × 44 × 2/0.20			
500	24 × 40 × 10/0.20+	45	--	65007
	48 × 44 × 3/0.20			
630	24 × 40 × 10/0.20+	50	--	66334
	48 × 44 × 5/0.20			
800	24 × 40 × 10/0.20+	55	--	7661
	48 × 44 × 7/0.20			

Copper power shunt



Item No.	Dimensions(mm)				Note
	a	b	L1	L2	
MST-63 × 6.3	63	6.3	73	170	Can be produced according to customer's drawing
MST-80 × 6.3	80	6.3	90	170	
MST-80 × 8	80	8	90	170	
MST-100 × 8	100	8	115	170	
MST-100 × 10	100	10	115	190	
MST-125 × 8	125	8	140	170	
MST-125 × 10	125	10	140	190	
MST-125 × 12.5	125	12.5	140	190	

Copper Bounded Earth Rod



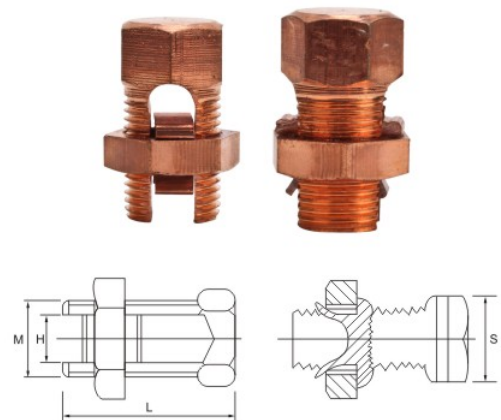
Material: Carbon Steel: C45, Copper Layer: T2(99.9% pure),
Clamp: Brass, Coupler: Brass
Specific

Coating type	Rod Diameter(mm)	Length(mm)
Copper Plated	12, 14,15, 16, 18, 19, 20	1200, 1500, 1850, 2400, 3000
Copper Coated	12, 14,15, 16, 18, 19, 20	1200, 1500, 1850, 2400, 3000

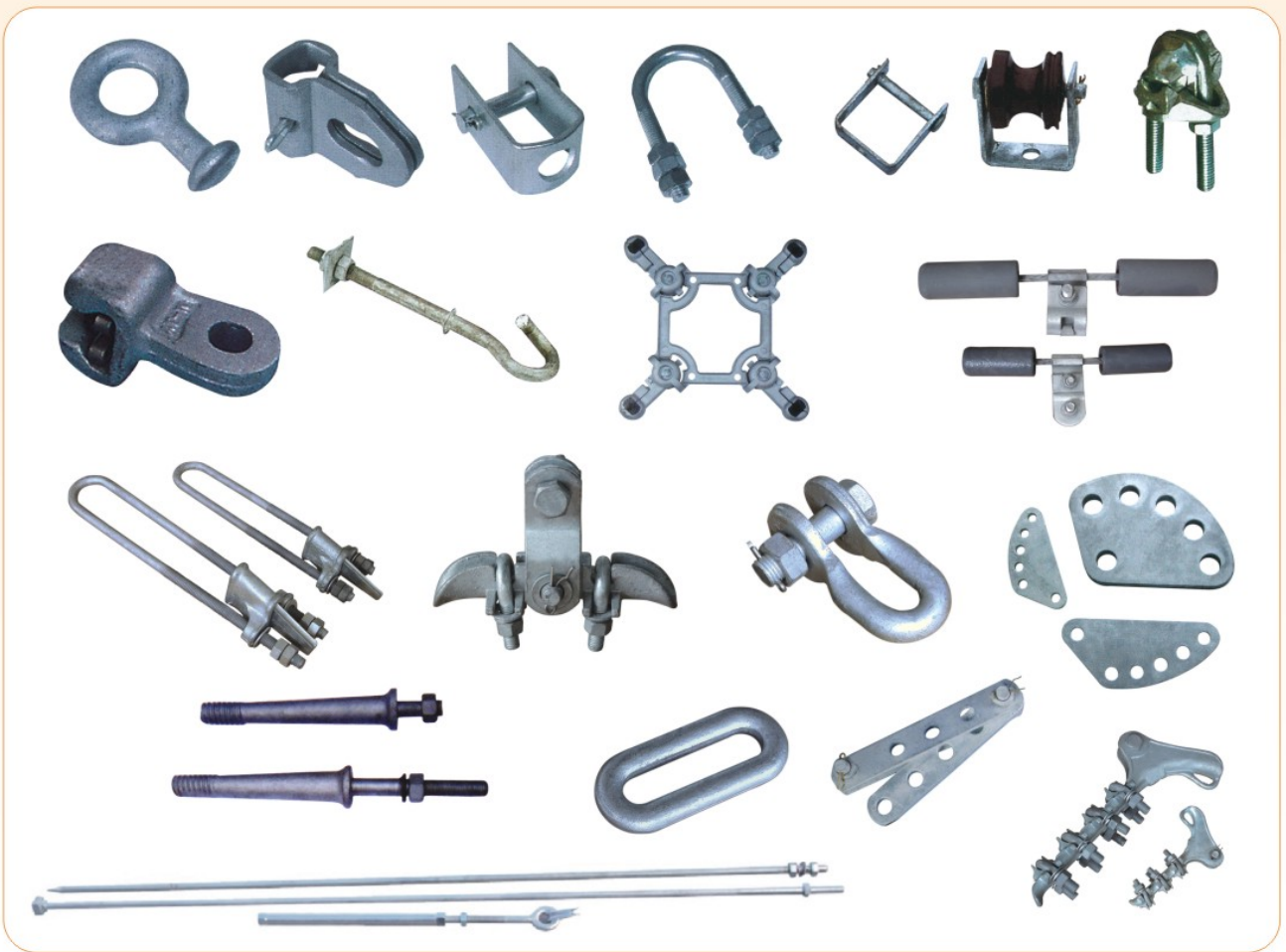
B/C Split Bolted Connector

It is suitable for the sequence and transportation of all kinds of conductor in electric netting, made of copper.

Item No.	L	M	H	S
B/C-16	27	M11	6	12
B/C-25	27	M15	7	16
B/C-35	35	M17	8	18
B/C-50-70	42	M23	12	24
B/C-90-120	46	M25	13	26
B/C-150-185	60	M29	17	30
B/C-200-240	63	M31	20	32



Line Fitting (Iron)





Ball-eyes



Socket eyes



U Clevis



U-Bolt



70KN STAY ROD



SOCKET



W-7K Socke Eye



HOOK



BALL EYE QL-7



SOCKET W-7M



SOCKET W-7E



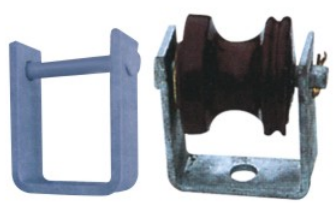
TC170



Bracket, Insulated Type



Clevis, Service Swinging



D Iron



U-Shackle, UO-7



J Hook



Pole Hook without plate



Bolt, Thimble Eye



Tie Strap



BOLT, DOUBLE UPSET



BOLT, OVALEYE-V



BOLT, OVALEYE-H



BOLT, OVALEYE-O



Eye Nut, ENV



Eye Nut, ENA



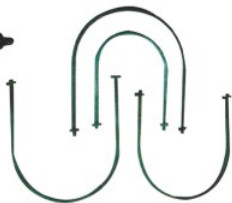
Eye Nut, ENO



Eye Nut, ENH



Bolt & Nut
16X100-420



U Bolt Tie Strap
16X140-320



Tie Strap
-5X50X160-300
-6X60X160-320



WIRE CLAMP



YOKE PLATE



BOLT, RAIL



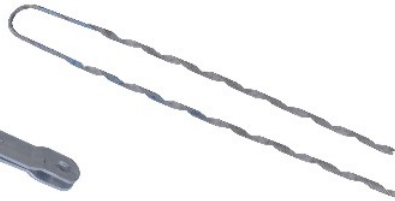
BALLEND HOOK



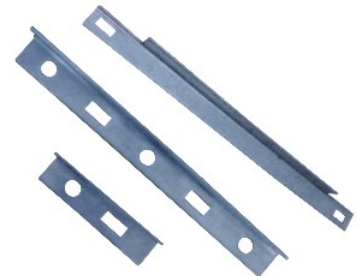
TKN-12



YOKE TWO PLATE



DEAD END GUYS



GALVANIZED CROSS ARM



Clamp, Loop

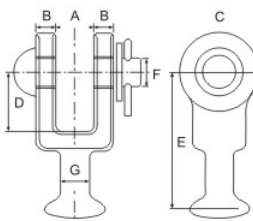


TURNBUCKLE

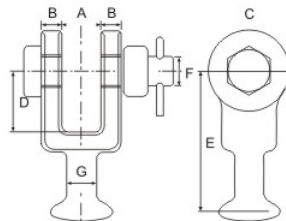


VOLTAGE DIVIDER RINGS

Eye Hook



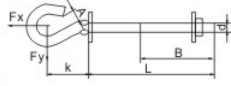
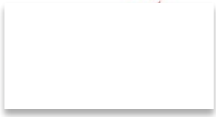
PIN TYPE



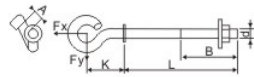
BOLT TYPE



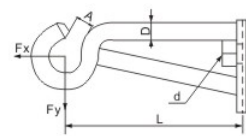
Item No.	Ultimate Strength kN.	Approx. Weight Kg.	Dimensions(mm)					
			A	B	C	D	E	F
YJ-BC1 120	120	0.6	21	11	44	33	76	16
YJ-BC1 160	160	1.2	26	13	50	38	89	20



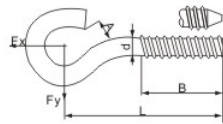
Item No.	D,MM	L,MM	B,MM	A,MM	K,MM	MPH, Fx,kH	MPH, Fy,kH
YJBH 12/200	M12	200	120	18	60	4.8	1.5
YJBH 12/240	M12	240	120	18	60	4.8	1.5
YJBH 16/200	M16	200	120	18	70	9.6	2.4
YJBH 16/240	M16	240	120	18	70	9.6	2.4
YJBH 16/320	M16	320	120	18	70	9.6	2.4



Item No.	D,MM	L,MM	B,MM	A,MM	K,MM	MPH, Fx,kH	MPH, Fy,kH
YJBS16/200	M16	200	120	20	80	11.9	2.4
YJBS16/240	M16	240	120	20	80	11.9	2.4
YJBS16/320	M16	320	120	20	80	11.9	2.4
YJBS20/200	M20	200	120	20	80	14.5	4.6
YJBS20/240	M20	240	120	20	80	14.5	4.6
YJBS20/320	M20	320	120	20	80	14.5	4.6
YJBS20/350	M20	350	120	20	80	14.5	4.6



Item No.	D	D,MM	L,MM	A,MM	MPH, Fx,kH	MPH, Fy,kH	Bec,r
YJBJ16	M16	16	206	20	9.7	6.2	1230
YJBJ20	M20	20	208	20	13.3	8.6	1900
YJBJ25	M24	25	290	24	24.6	19.5	3400



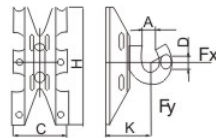
Item No.	D,MM	L,MM	B,MM	A,MM	MPH, Fx,kH	MPH, Fy,kH	Bec,r
YJHS12	12	165	85	16	5.3	4.1	240
YJHS16	16	170	90	16	8.8	6.6	440
YJHS20	20	165	65	18	16.6	12.9	730



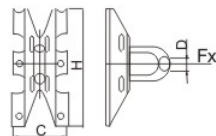
A-TYPE



B-TYPE

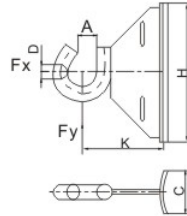


Item No.	D,MM	A,MM	K,MM	H,MM	C,MM	MPH, Fx,kH	MPH, Fy,kH
YJCS16	16	18	67	200	96	17.4	13.3

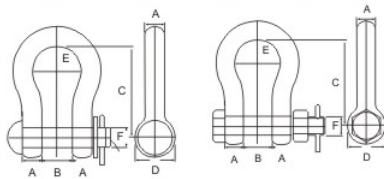


Item No.	D,MM	A,MM	H,MM	C,MM	MPH, Fx,kH	MPH, Fy,kH
YJCD16	16	18	200	96	17.4	13.3

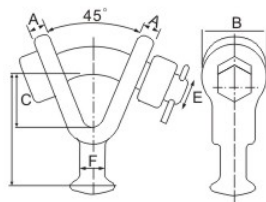
Item No.	D,MM	A,MM	K,MM	H,MM	C,MM	MPH, Fx,kH	MPH, Fy,kH	Bec,r
YJCF16	16	18	85	150	45	17.8	12.5	610
YJCF20	20	18	91	150	45	27.7	17.7	740



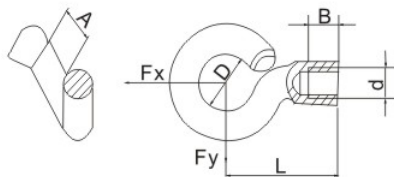
Item No.	Ultimate Strength kN.	Approx. Weight Kg.	Dimensions(mm)					
			A	B	C	D	E	F
YJ-BSD 120	120	0.55	16	25	73	32	20	16
YJ-BSD 160	160	1.00	20	27	84	32	23	19
YJ-BSD 260	260	1.50	22	27	92	46	22	22
YJ-BSD 350	350	2.80	25	30	110	60	27	25
YJ-BSD 460	460	3.80	32	38	110	66	25	32



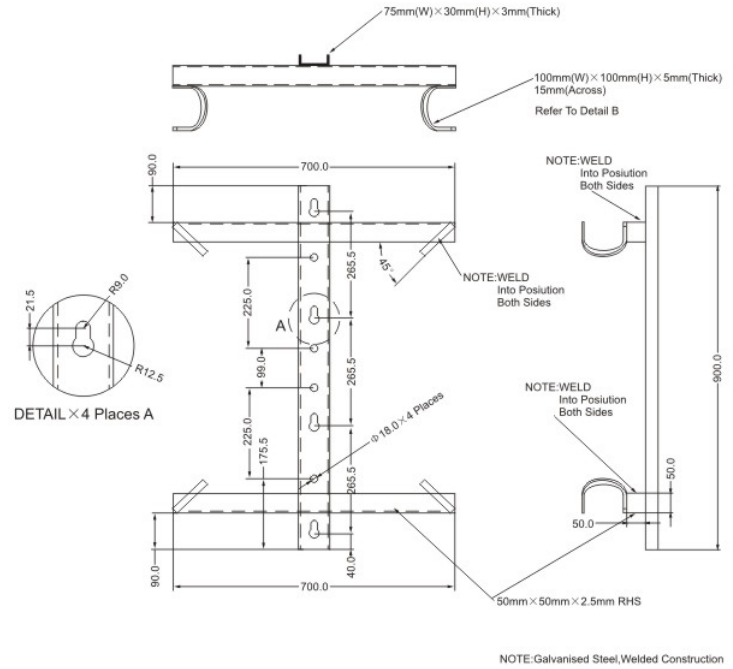
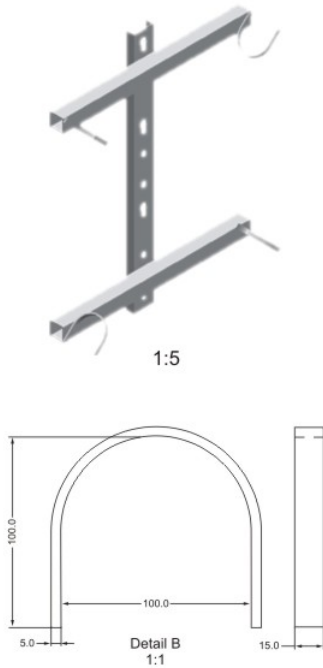
Item No.	Ultimate Strength kN.	Approx. Weight Kg.	Dimensions(mm)					
			A	B	C	D	E	F
YJ-BYC80	30	0.8	12	45	38	80	20	16
YJ-BYC136	30	0.8	12	45	38	80	20	16
YJ-22BYC	50	1.2	14	55	60	100	22	22



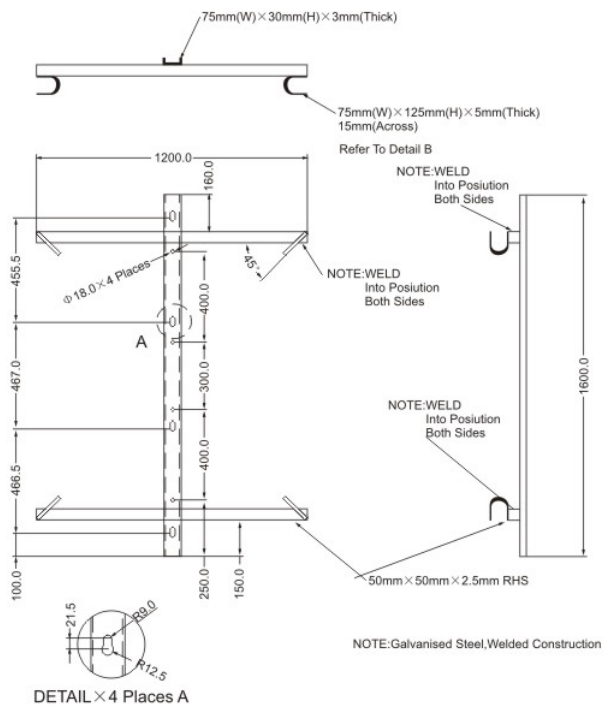
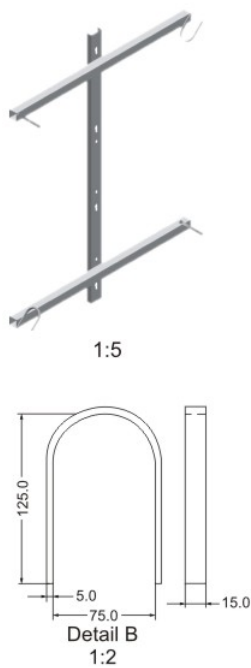
Item No.	D	D,MM	L,MM	B,MM	A,MM	MPH, Fx,kH	MPH, Fy,kH	Bec,r
YJPD16	M16	38	76	18	20	15.4	2.0	440
YJPD20	M20	38	76	18	20	15.4	4.0	550



Medium Bracket

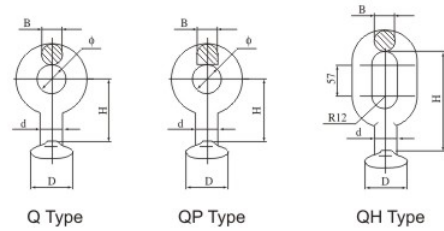


Large Bracket

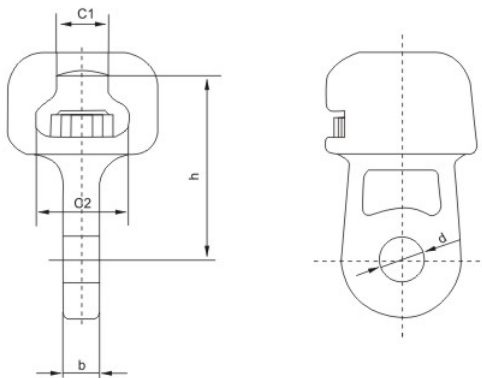


Ball-Eye (Type Q, QP, QH)

Item No.	Suitable Insulator	Dimensions(mm)					Ultimate Strength(kn)
		d	ϕ	B	D	H	
Q-7	XP-7 X-4.5	17	17	17	33	50	70
QP-7	X-4.5	17	17	17	33	50	70
QP-10	X-10	17	17	17	33	50	100
QP-16	X-16	21	26	21	41	60	160
QP-20	X-20	25	30	25	49	80	200
QP-30	X-30	25	39	28	49	80	300
QH-7	XP-7	17	57	17	33	100	70
QH-10	XP-10	17	60	17	33	110	100
QH-12	XP-12	17	63	17	33	120	120
QH-16	XP-16	21	100	21	41	155	160



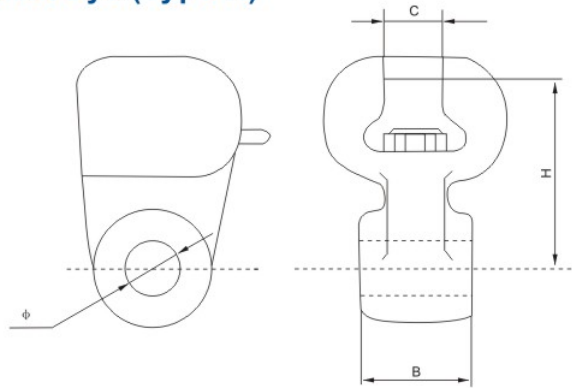
Socket Eye (Type W)



Item No.	Suitable Insulator	Dimensions(mm)					Socket IEC Code	Rated Failure Load(kN)	Weight(kg)
		C1	C2	h	d	b			
W-7A	XP-7 XP-4.5	19.2	34.5	70	20	16	16mmA.B	70	0.8
W-7B	XP-7 X-4.5	19.2	34.5	115	20	16	16mmA.B	70	0.9
W ₁ -10	XP-10	19.2	34.5	85	20	18	16mmA.B	100	1.0
W ₁ -12	XP-12	19.2	34.5	85	22	20	16mmA.B	120	1.2

The body is made of malleable iron, hot-dip galvanized. Security clip is made of bronze or stainless steel.

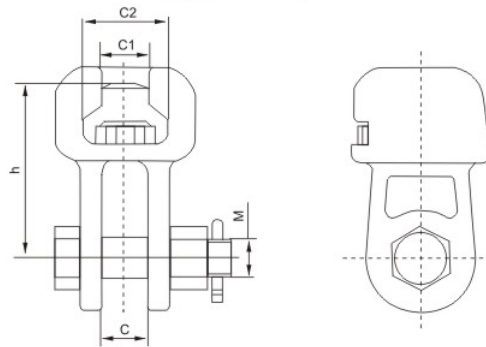
Socket Eye (Type R)



Item No.	Dimensions(mm)				Socket IEC Code	Rated Failure Load(kN)	Weight(kg)
	B	C	H	φ			
W-0720	20	19.2	70	20	16mmB	70	1
W-0724	24	19.2	70	20	16mmB	70	1.1
W-0728	28	19.2	70	20	16mmB	70	1.2
W-0732	32	19.2	70	20	16mmA	70	1.3
W-1032	32	19.2	70	20	16mmA	100	1.5
W-1045	45	19.2	70	20	16mmA	100	1.5
W-12	32	19.2	85	24	16mm	120	1.6

The body is made of malleable iron, hot-dip galvanized. Security clip is made of stainless steel.

Socket Clevis (Type WS)

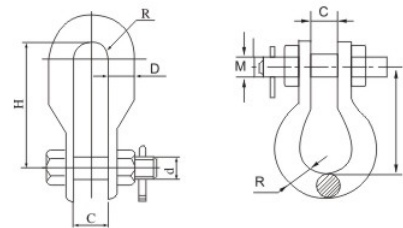


Item No.	Suitable Insulator	Dimensions(mm)					Socket IEC Code	Rated Failure Load(kN)	Weight(kg)
		C	C1	C2	M	h			
WS-7	XP-7	18	19.2	34.5	16	70	16mm	70	1.0
WS-10	XP-10	20	19.2	34.5	18	85	16mm	100	1.2
WS-12	XP-12	24	19.2	34.5	22	85	16mm	120	2.1
WS-16	XP-16	26	23.0	42.5	24	95	20mm	160	2.6
WS-20	XP-20	30	27.5	51.0	27	100	24mm	200	4.5
WS-21	XP-21	30	23.0	42.5	27	100	20mm	210	4.3
WS-30	XP-30	36	27.5	51.0	36	110	24mm	300	5.7

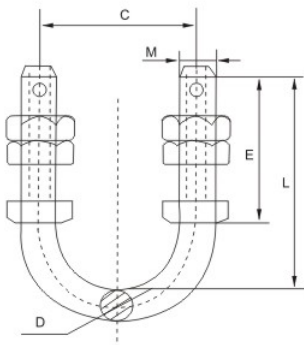
Type WS-7 and WS-10 socket clevis are made of malleable iron, other type of socket clevis are made of casting steel.

U Shackle

Item No.	Dimensions(mm)					Ultimate Strength(kn)	Weight (kg)
	C	d	D	H	R		
U-7	20	16	16	60	10	70	0.5
U-10	22	18	18	70	11	100	0.6
U-12	24	22	20	90	12	120	1.0
U-16	26	24	22	95	13	160	1.5
U-7A	19	16	16	76	11	70	0.65
U-12A	22	18	18	72	18	120	0.72
U-16A	26	20	20	89	19	160	0.89
U-22A	26	22	22	89	19	220	1.45



U-Bolt



Item No.	Dimensions(mm)					Rated Failure Load(kN)	Weight(kg)
	C	D	E	L	M		
U-1240	40	12	45	80	12	35	0.39
U-1440	40	14	60	90	14	35	0.42
U-1470	70	14	70	120	14	40	0.46
U-1670	70	16	70	140	16	50	0.80
U-1870	70	18	80	105	18	60	0.86
U-1880	80	18	60	105	18	60	0.88
U-1890	90	18	60	110	18	60	0.90
U-2070	70	20	90	115	20	70	1.20
U-2080	80	20	70	115	20	70	1.70
U-2090	90	20	90	120	20	70	1.28
U-2280	80	22	90	130	22	100	1.30
U-2290	90	22	100	140	22	100	1.34

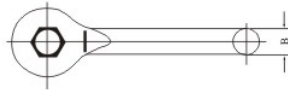
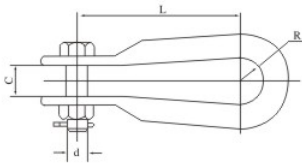
The cotter pins is made of stainless steel, other parts are made of hot-dip galvanized steel.



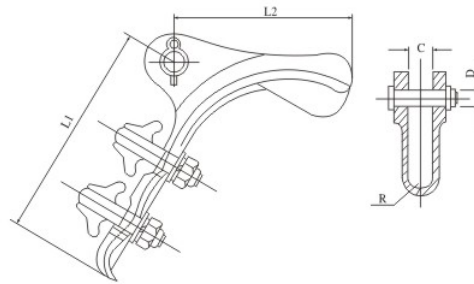
UL Shackle



Item No.	Dimensions(mm)					Ultimate Strength(kn)	Weight(kg)
	C	d	B	L	R		
UL-7	20	16	16	120	15	70	0.65
UL-10	22	18	18	140	17	100	0.92
UL-12	24	22	20	140	18	120	1.40
UL-16	26	24	22	140	19	160	1.64
UL-21	30	27	24	160	22	210	2.90



Tension Clamps (Bolt Type)



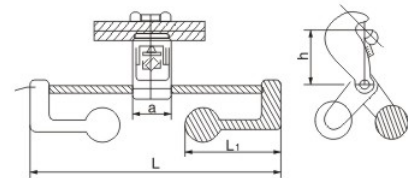
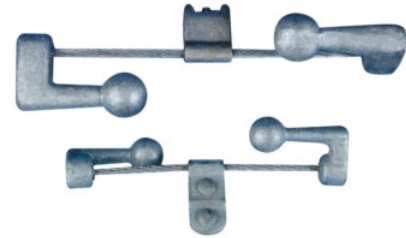
Item No.	Diameter of Conductor (mm)	Dimensions(mm)					Bolt		Ultimate Strength(kn)
		D	C	L1	L2	R	No.	Dia(mm)	
NLD-1	5.0~10.0	16	18	150	120	6.5	2	12	18
NLD-2	10.1~14.0	16	18	205	130	8.0	3	12	41
NLD-3	14.1~18.0	18	22	310	160	11.0	4	16	71
NLD-4	18.1~23.0	18	25	410	220	12.5	5	16	91

The body is made of malleable iron, hot-dip galvanized. Security clip is made of bronze or stainless steel.

Combined Type Spacer-dampers

Item No.	Applicable Conductor	Dimensions (mm)				Specification	Weight (Kg)	Specification
		a	h	L ₁	L			
FDZ-1	7.0-12.0	50	66.0	120	320	19/1.8	0.7	1.80
FDZ-2	11.0-15.0	50	66.0	130	350	19/1.8	0.9	2.30
FDZ-3	14.0-19.0	60	66.0	150	430	19/2.2	1.7	4.40
FDZ-4	18.0-22.5	60	66.0	160	470	19/2.2	2.1	5.50
FDZ-5F	22.0-29.0	60	95.0	180	520	19/2.6	3.0	7.10
FDZ-6F	28.0-35.0	60	95.0	180	520	19/2.6	3.6	8.30
FDZ-1T	7.8	50	30.7	120	320	19/1.8	0.7	1.80
FDZ-2T	9.0-9.6	50	30.7	130	350	19/1.8	0.9	2.30
FDZ-3T	11.0-11.5	60	44.7	150	430	19/2.2	1.7	4.40
FDZ-4T	13.0	60	44.7	160	470	19/2.2	2.1	5.50

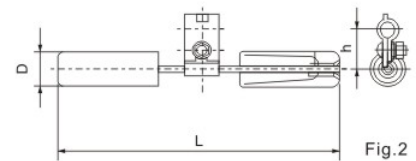
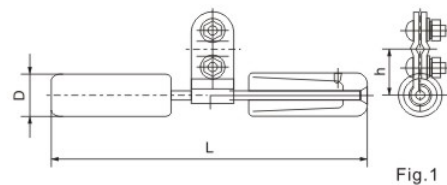
Clamp is aluminum alloy and counter weight piece ys grey cast iron, painted. If user demands the counter weight piece will be hot-dip galvanized.



FD Dampers

Item No.	Conductor Section Area (mm ²)		Fig No.	Dimensions (mm)			Weight (Kg)
	Steel Wire	AAC&ACSR		L	D	h	
FD-1		35-50	2	300	40	40	1.5
FD-2		70-95	1	370	46	55	2.4
FD-3		120-150	1	450	56	65	4.5
FD-4		185-240	1	500	62	70	5.6
FD-5		300-400	1	550	67	70	7.2
FD-6		500-630	1	550	70	75	8.6
FG-35	35		2	300	42	50	1.8
FG-50	50		2	350	46	50	2.4
FG-70	70		1	400	56	60	4.2
FG-100	100		1	500	62	85	5.9

Counter weights are greyiron, painted the other parts are hot-dip galvanized steel.

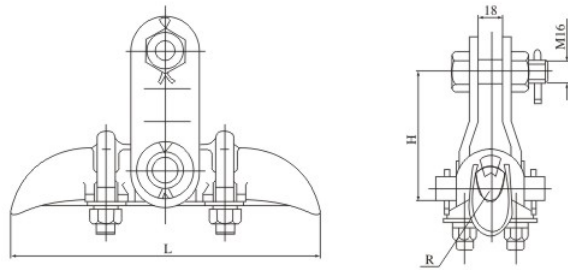




XGU Suspension Clamps

Item No.	Wire Range (mm)	Dimensions(mm)			Ultimate Strength(kn)
		H	L	R	
XGU-1	5.0~7.0	82.5	180	4.0	40
XGU-2	7.1~3.0	82	200	7.0	40
XGU-3	13.1~21.0	101	220	11.0	40
XGU-4	21.1~26.0	109	250	13.5	40

The cotter pins is made of stainless steel, other parts are made of hot-dip galvanized steel.

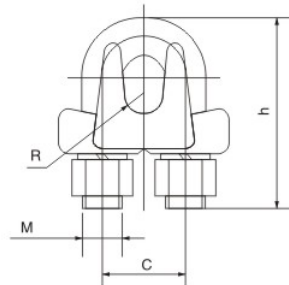


JK Guy Clips



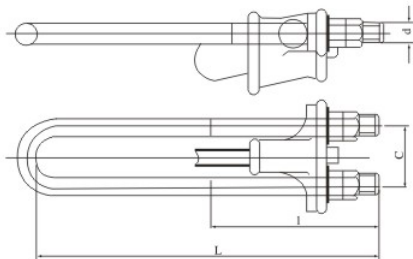
Item No.	Steel wire Dia (mm)	Dimensions (mm)				Weight (Kg)
		M	h	R	C	
JK-1	6.6~7.8	10	54	5	22	0.18
JK-2	9.0~11.0	10	72	6	28	0.30
JK-3	12.0~14.0	20	60	7.5	33	0.65

The body is malleable iron. The other parts are steel. All ferrous parts are hot-dip galvanized



UT clamps

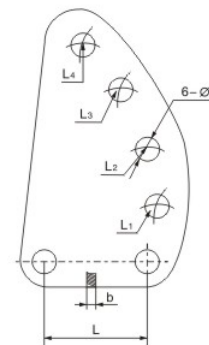
Item No.	Steel wire	Dimensions(mm)				Ultimate strength (kN)	weight (kg)
	Conductor (mm)	d	L	I	C		
NUT-1	6.6~7.8	16	370	200	56	45	2.1
NUT-2	9.0~11.5	18	452	250	62	88	3.2
NUT-3	13.0~14.0	22	500	300	74	143	5.4
NUT-4	15.0~16.0	24	580	350	82	164	7.2

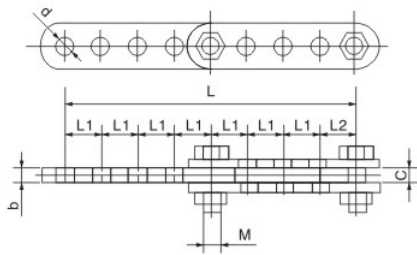


Adjuster Plates

Item No.	Dimensions (mm)							Rated Failure load(kN)	Weight (Kg)
	Ø	L	L ₁	L ₂	L ₃	L ₄	b		
DB-7	18	70	95	120	145	170	16	70	1.70
DB-10	20	80	110	140	170	200	16	100	2.70
DB-12	24	100	135	170	205	240	16	120	3.20
DB-16	26	110	125	140	155	170	18	160	4.10
DB-20	30	120	135	150	165	180	26	200	7.40
DB-25	33	135	135	150	165	180	30	250	11.50
DB-30	39	120	140	160	180	200	32	300	12.50
DB-60	51	135	160	185	210	235	42	600	21.60
DB-5024	45	140	165	190	215	240	38	500	18.50
DB-5032	45	140	185	230	275	320	38	500	14.40
DB-21G	26	120	135	150	165	182	20	310	6.20
DB-32G	33	120	140	160	180	200	38	320	9.20

Hot-dip galvanized steel



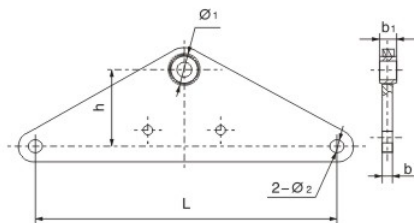


Adjuster Plates

Item No.	Dimensions (mm)							Rated Failure load(kN)	Weight (Kg)	
	L ₁	L ₂	M	d	b	c	L			
PT-7	45	60	16	18	16	18	225	345	70	2.00
PT-10	50	65	18	20	16	20	225	300	100	2.90
PT-12	60	75	22	24	16	24	300	465	120	5.20
PT-16	65	50	24	26	18	26	325	505	160	7.00
PT-20	70	60	27	29	24	30	350	550	200	10.14
PT-30	80	70	36	39	32	38	400	630	300	14.00
PT-50	160	80	42	45	38	40	740	1280	500	24.60
PT-60	180	90	48	51	42	44	820	1390	600	34.60

The cotter pin are stainless steel, the other part shot-dip galvanized steel.

Yoke Plates



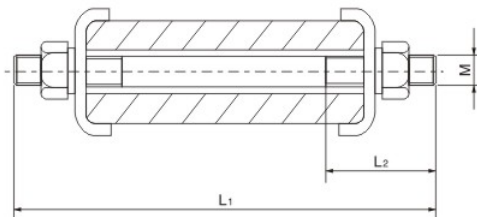
Item No.	Dimensions (mm)						Rated Failure load(kN)	Weight (Kg)
	b	b ₁	h	Ø ₁	Ø ₂	L		
L-1040	16	16	70	20	18	400	100	4.43
L-1240	16	16	70	24	18	400	120	4.66
L-1640	18	18	100	26	20	400	160	5.80
L-2140	16	26	100	30	20	400	200	6.90
L-2052	16	26	100	30	26	520	200	8.00
L-2055	16	26	200	30	24	550	200	11.80
L-2540	16	30	110	33	24	400	250	9.00
L-3040	18	32	110	39	26	400	300	10.00
L-4255	24	38	250	45	30	550	420	24.40
L-5040	30	38	110	45	33	400	500	14.80
L-6045	32	42	200	51	39	450	600	25.50
L-6050	32	42	250	51	39	500	600	23.30

Hot-dip galvanized steel

Spacers For Rectangular Bar

Item No.	Bus width (mm)	Dimensions (mm)			Weight (Kg)
		M	L ₁	L ₂	
MJG-01	63	10	100	26	0.1
MJG-02	80	10	120	26	0.1
MJG-03	100	10	140	26	0.2
MJG-04	125	10	26	0.2	

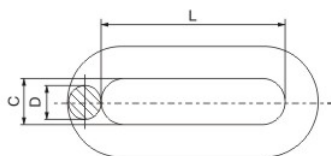
All parts are hot-dip galvanized steel.

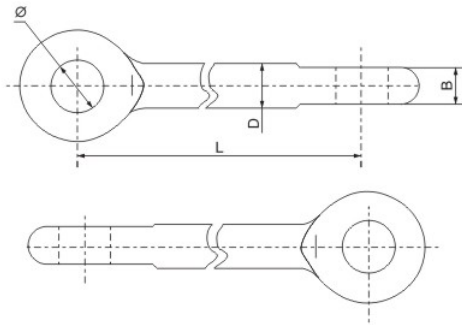


Extension Ring (ring Monoblock Forging)

Item No.	Dimensions (mm)			Rated Failure load(kN)	Weight (Kg)
	C	D	L		
PH-7	20	16	80	70	0.4
PH-10	22	18	100	100	0.6
PH-12	24	20	120	120	0.9
PH-16	26	22	140	160	1.5
PH-20	30	24	160	200	1.6
PH-25	34	26	160	250	2.0
PH-30	38	30	180	300	3.0

Hot-dip galvanized steel



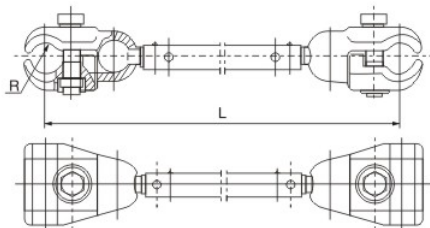


Extension rods

Item No.	Dimensions (mm)				Rated Failure load(kN)	Weight (Kg)
	D	Ø	B	L		
YL-1012	20	20	16	120	100	0.8
YL-1040	20	20	16	400	100	1.1
YL-1050	20	20	16	500	100	1.4
YL-1069	20	20	16	690	100	1.9
YL-10100	20	20	16	1000	100	2.2
YL-1243	22	24	18	430	120	1.6
YL-1643	22	26	18	430	160	1.6
YL-2043	24	29	21	430	200	3.0
YL-2543	33	33	22	430	250	3.5

Hot-dip galvanized steel

Spacers for Double Conductor

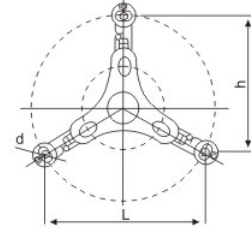


Item No.	Applicable Conductor(mm ²)	Dimensions (mm)		Rated Failure load(kN)	Weight (Kg)
		R	L		
FJQ-403	120-150	9.5	400	7	1.00
FJQ-404	185-240	11.0	400	7	1.00
FJQ-405	300-400	14.5	400	10	1.20
FJQ-204	185-240	11.0	200	7	0.85
FJQ-205	300-400	14.5	200	10	1.05
FJQ-455	300-400	15.4	450	10	2.43

The body is aluminum, the other parts are hot-dip galvanized steel.

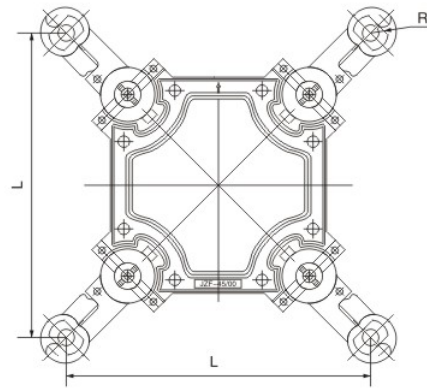
S-Spacer damper of 500kv wire

Item No.	Wire Range(mm)	Dimensions(mm)		Weight(kg)
		H	L	
FJZ-380/440	HL4GJT-440	640	800	13.2



The clamp is aluminium alloy, Dampers are elastomer, the other parts are hot-dip galvanized steel.

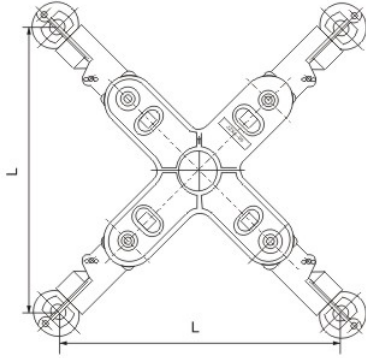
Square Frame Type Spacer Dampers



Item No.	Applicable Conductor (mm ²)	Dimensions (mm)		Weight (Kg)
		L	R	
FJZ-445F/300	LGJ-300/20.25.40.50	450	9.7	7.8
FJZ-445F/300A	LGJ-300/70	450	10.6	7.8
FJZ-445F/400	LGJ-400/50.65	450	12.0	7.8
FJZ-445F/400A	LGJ-400/20.25.35	450	11.4	7.8
FJZ-445F/400B	LGJ-400/95	450	12.6	7.8

The clamps and bracket are made of aluminum alloy, dampers are made of elastomer (DEMP).

Cross mype Spacer Dampers



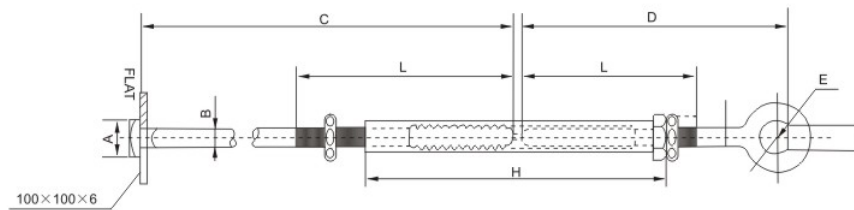
Item No.	Applicable Conductor	Dimensions (mm)		Weight (Kg)
		L		
JZX4-45300	23.0-24.5	450		7.5
JZX4-45300J	24.5-26.0	450		7.5
JZX4-45400	26.0-28.0	450		7.5
JZX4-45400J	28.1-29.5	450		7.5
JZX4-45500G	30.0	450		8.2

The clamps and bracket are made of aluminum alloy, dampers are made of elastomer (DEMP).

Turnbuckle Stay Rod



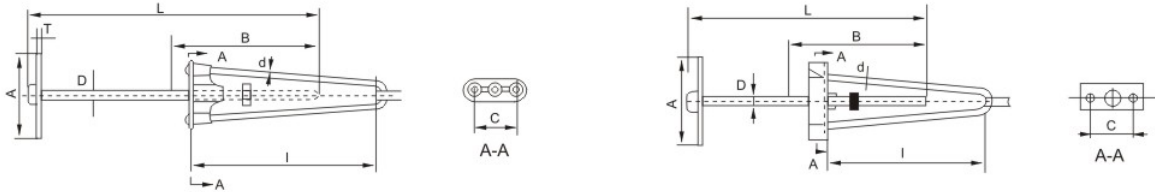
Material: C45 Steel Galvanized



Item No.	Dimensions(mm)							U.T.S(kN)	Weight(kg)
	A	B	C	D	E	H	L		
CH-16	30	16	2000	314	22	350	230	54	5.2
CH-18	35	18	2440	321	25	405	230	65	7.9
CH-22	35	20	2440	325	25	400	230	85	8.8
CH-24	40	22	2500	334	30	400	230	110	10.5

Made of hot-dip galvanized steel.

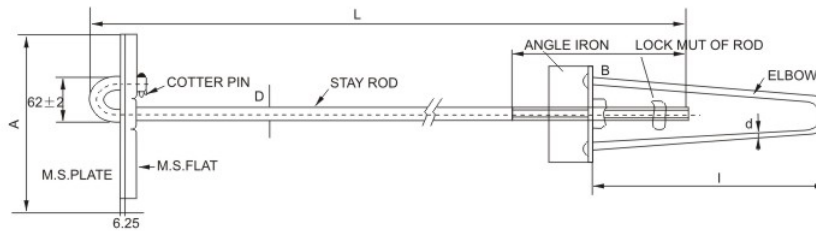
Bow Stay Rod



Item No.	Fig No.	Dimensions(mm)								Rated Failure Load(kN)	Weight(kg)
		L	I	D	d	A	B	C	T		
LZ-18/180	1	1800	400	18	12	300	305	98	6	65	1.4
LZ-22/240	1	2400	400	22	14	380	305	110	6	96	17.9
LC-18/180	2	1800	300	18	12	300	305	98	6	65	13.8
LC-22/240	2	2400	380	22	14	380	305	110	6	96	17.0

Made of hot-dip galvanized steel.

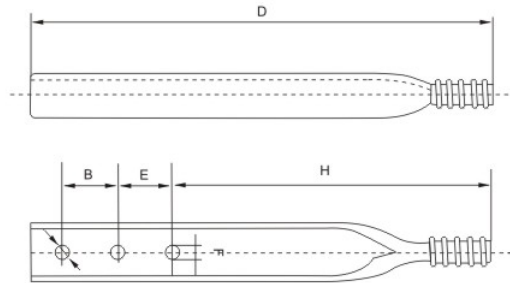
Bow Stay Rod



Item No.	Dimensions(mm)						Rated Failure Load(kN)	Weight(kg)
	L	I	D	d	A	B		
LJ-18/200	2000	300	18	14	300	100	65	9.9
LJ22/250	2500	350	22	16	300	120	95	12

Made of hot-dip galvanized steel.

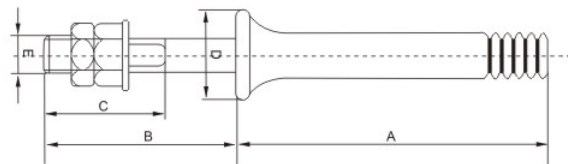
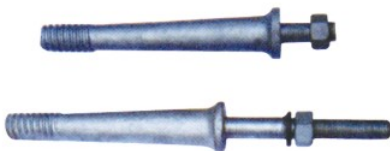
Pole Top Pin



Item No.	Steel Head A(inch)	Dimensions(mm)					Weight(kg)
		B	F	H	D	E	
GJQ-1266	1	127	17.5	254	406	–	1.52
GJQ-1368	1	76	17.5	229	456	76	1.85
GJQ-740	1	127	21	279	508	76	2.70
GJQ-720	1-3/8	127	21	279	508	–	2.90

Made of hot-dip galvanized Steel. Lead Thread Pin meets ANSI standard.

Insulator Pin



Item No.	Steel Head A(inch)	Dimensions(mm)					Weight(kg)	Remarks
		A	B	C	D	E		
GJB-20	Re15	115	140	75	32	18	0.8	For wood crossarms
GJB-22	Re15	165	140	75	38	18	0.99	
GJB-24	Re15	230	140	75	40	22	1.59	
GJB-26	Re16	165	140	75	44	18	1.28	
GJB-28	Re16	230	140	75	50	22	2.09	
GJB-30	Re16	305	140	75	63	22	2.84	
GJB-21	Re15	115	50	45	32	18	0.65	For Steel crossarms
GJB-23	Re15	165	50	45	38	18	0.89	
GJB-25	Re15	230	50	45	40	22	1.37	
GJB-27	Re16	165	50	45	44	18	1.10	
GJB-29	Re16	230	50	45	50	22	1.87	
GJB-31	Re16	305	50	45	63	22	2.62	

The body is made of hot-dip galvanized drop forged steel, lead pin-head meets BS standard.